

## 3-Methylthiobenzamide

Mahmood-ul-Hassan Khan,<sup>a</sup> Shahid Hameed,<sup>a\*</sup> Tashfeen Akhtar<sup>a</sup> and Jason D. Masuda<sup>b</sup>

<sup>a</sup>Department of Chemistry, Quaid-i-Azam University, Islamabad-45320, Pakistan, and <sup>b</sup>Department of Chemistry, Saint Mary's University, Halifax, Nova Scotia, Canada B3H 3C3

Correspondence e-mail: shameed@qau.edu.pk

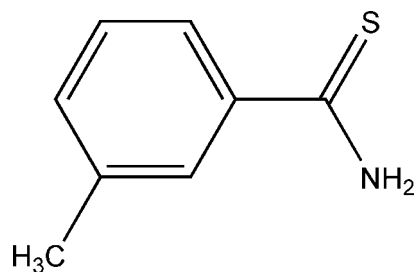
Received 23 May 2009; accepted 25 May 2009

Key indicators: single-crystal X-ray study;  $T = 296$  K; mean  $\sigma(\text{C}-\text{C}) = 0.003$  Å;  $R$  factor = 0.039;  $wR$  factor = 0.112; data-to-parameter ratio = 19.5.

In the title compound,  $\text{C}_8\text{H}_9\text{NS}$ , the dihedral angle between the aromatic ring and the thioamide fragment is  $36.0$  ( $2$ )°. There are  $\pi$ -stacking interactions between coplanar aryl fragments, with a centroid-centroid separation of  $3.658$  ( $2$ ) Å. In addition, there are intermolecular hydrogen bonds between the amino group and the S atoms.

### Related literature

For our previous work on the synthesis and biological screening of five-membered heterocycles, see: Akhtar *et al.* (2006, 2007, 2008); Serwar *et al.* (2009). For related structures, see: Jian *et al.* (2006); Khan *et al.* (2009a,b).



### Experimental

#### Crystal data

$\text{C}_8\text{H}_9\text{NS}$   
 $M_r = 151.22$   
 Monoclinic,  $P2_1/c$   
 $a = 7.717$  (5) Å

$b = 10.267$  (7) Å  
 $c = 10.100$  (7) Å  
 $\beta = 97.186$  (9)°  
 $V = 794.0$  (9) Å<sup>3</sup>

$Z = 4$   
 Mo  $K\alpha$  radiation  
 $\mu = 0.33$  mm<sup>-1</sup>

$T = 296$  K  
 $0.37 \times 0.27 \times 0.20$  mm

#### Data collection

Bruker APEXII CCD  
 diffractometer  
 Absorption correction: multi-scan  
 (SADABS; Bruker, 2008)  
 $T_{\min} = 0.793$ ,  $T_{\max} = 0.930$

6234 measured reflections  
 1797 independent reflections  
 1447 reflections with  $I > 2\sigma(I)$   
 $R_{\text{int}} = 0.021$

#### Refinement

$R[F^2 > 2\sigma(F^2)] = 0.039$   
 $wR(F^2) = 0.112$   
 $S = 1.08$   
 1797 reflections

92 parameters  
 H-atom parameters constrained  
 $\Delta\rho_{\text{max}} = 0.22$  e Å<sup>-3</sup>  
 $\Delta\rho_{\text{min}} = -0.29$  e Å<sup>-3</sup>

**Table 1**

Hydrogen-bond geometry (Å, °).

$D-H\cdots A$	$D-H$	$H\cdots A$	$D\cdots A$	$D-H\cdots A$
$\text{N1}-\text{H1A}\cdots\text{S1}^i$	0.86	2.66	3.455 (2)	155
$\text{N1}-\text{H1B}\cdots\text{S1}^{ii}$	0.86	2.58	3.422 (3)	165

Symmetry codes: (i)  $-x, y - \frac{1}{2}, -z + \frac{1}{2}$ ; (ii)  $-x, -y + 1, -z$ .

Data collection: APEX2 (Bruker, 2008); cell refinement: SAINT (Bruker, 2008); data reduction: SAINT; program(s) used to solve structure: SHELXS97 (Sheldrick, 2008); program(s) used to refine structure: SHELXL97 (Sheldrick, 2008); molecular graphics: ORTEP-3 for Windows (Farrugia, 1997); software used to prepare material for publication: SHELXTL (Sheldrick, 2008).

The authors thank the HEC, Pakistan for a PhD fellowship awarded to MuHK under the indigenous PhD Program. JDM thanks Saint Mary's University for funding.

Supplementary data and figures for this paper are available from the IUCr electronic archives (Reference: BT2967).

### References

- Akhtar, T., Hameed, S., Al-Masoudi, N. A. & Khan, K. M. (2007). *Heteroat. Chem.* **18**, 316–322.  
 Akhtar, T., Hameed, S., Khan, K. M. & Choudhary, M. I. (2008). *Med. Chem.* **4**, 539–543.  
 Akhtar, T., Hameed, S., Lu, X., Yasin, K. A. & Khan, M. H. (2006). *X-ray Struct. Anal. Online*, **22**, x307–308.  
 Bruker (2008). APEX2, SAINT and SADABS. Bruker AXS Inc., Madison, Wisconsin, USA.  
 Farrugia, L. J. (1997). *J. Appl. Cryst.* **30**, 565.  
 Jian, F. F., Zhao, P., Zhang, L. & Zheng, J. (2006). *J. Fluorine Chem.* **127**, 63–67.  
 Khan, M.-H., Hameed, S., Akhtar, T. & Masuda, J. D. (2009a). *Acta Cryst.* **E65**, o1128.  
 Khan, M.-H., Hameed, S., Akhtar, T. & Masuda, J. D. (2009b). *Acta Cryst.* **E65**, o1333.  
 Serwar, M., Akhtar, T., Hameed, S. & Khan, K. M. (2009). *ARKIVOC*, pp. 210–221.  
 Sheldrick, G. M. (2008). *Acta Cryst.* **A64**, 112–122.

**supplementary materials**

*Acta Cryst.* (2009). E65, o1446 [ doi:10.1107/S1600536809019849 ]

### 3-Methylthiobenzamide

M.-H. Khan, S. Hameed, T. Akhtar and J. D. Masuda

#### Comment

Thioamides are not only important intermediates in the synthesis of heterocyclic compounds but they also possess enormous biological activities as reported in our previous articles (Khan *et al.*, 2009a). In the present article, we report the crystal structure of 3-methylthiobenzamide, synthesized as a continuation of our previous work on the synthesis and biological screenings of five membered heterocycles (Akhtar *et al.*, 2006, 2007, 2008; Serwar *et al.*, 2009).

There are two distinct hydrogen bonding interactions between the nitrogen and sulfur atoms. The first arranges the dimer with N $\cdots$ S distances of 3.422 (3) Å and the second links two thioamide dimers through another N $\cdots$ S interaction on the order of 3.455 (2) Å. These N—H $\cdots$ S hydrogen bonding interactions are similar to those seen in *p*-trifluoromethylbenzothioamide where the corresponding interactions are between 3.3735 Å and 3.5133 Å (Jian *et al.*, 2006), in 4-chlorobenzothioamide where the N $\cdots$ S distances are 3.3769 (15) Å and 3.4527 (15) Å (Khan *et al.*, 2009a) and in 4-bromobenzothioamide where the N $\cdots$ S distances are between 3.500 (2) Å and 3.605 (3) Å (Khan *et al.*, 2009b).

#### Experimental

The title compound was synthesized from 3-methylbenzonitrile according to a reported procedure (Khan *et al.*, 2009a). The recrystallization of the product from chloroform afforded crystals suitable for X-ray analysis.

#### Refinement

The hydrogen atoms were placed in geometrically idealized positions with C—H distances of 0.93 Å (aromatic C—H), 0.96 Å (methyl) and 0.86 Å (amide N—H) and constrained to ride on the parent atom with  $U_{\text{iso}}(\text{H}) = 1.2 U_{\text{eq}}(\text{C})$  for aromatic and amide protons or  $U_{\text{iso}}(\text{H}) = 1.5 U_{\text{eq}}(\text{C}_{\text{methyl}})$ .

#### Figures

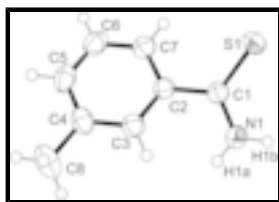


Fig. 1. Molecular structure of 3-methylthiobenzamide showing displacement ellipsoids at the 50% probability level (for non-H atoms).

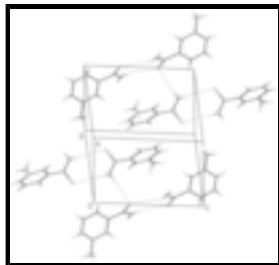


Fig. 2. Packing diagram of 3-methylthiobenzamide. Hydrogen bonds shown as dashed lines.

### 3-Methylthiobenzamide

#### Crystal data

$C_8H_9NS$

$M_r = 151.22$

Monoclinic,  $P2_1/c$

Hall symbol:  $-P\ 2ybc$

$a = 7.717\ (5)\ \text{\AA}$

$b = 10.267\ (7)\ \text{\AA}$

$c = 10.100\ (7)\ \text{\AA}$

$\beta = 97.186\ (9)^\circ$

$V = 794.0\ (9)\ \text{\AA}^3$

$Z = 4$

$F_{000} = 320$

$D_x = 1.265\ \text{Mg m}^{-3}$

Mo  $K\alpha$  radiation

$\lambda = 0.71073\ \text{\AA}$

Cell parameters from 2572 reflections

$\theta = 2.7\text{--}27.1^\circ$

$\mu = 0.33\ \text{mm}^{-1}$

$T = 296\ \text{K}$

Block, yellow

$0.37 \times 0.27 \times 0.20\ \text{mm}$

#### Data collection

Bruker APEXII CCD  
diffractometer

Radiation source: fine-focus sealed tube

Monochromator: graphite

$T = 296\ \text{K}$

$\varphi$  and  $\omega$  scans

Absorption correction: multi-scan  
(SADABS; Bruker, 2008)

$T_{\min} = 0.793$ ,  $T_{\max} = 0.930$

6234 measured reflections

1797 independent reflections

1447 reflections with  $I > 2\sigma(I)$

$R_{\text{int}} = 0.021$

$\theta_{\max} = 27.5^\circ$

$\theta_{\min} = 2.7^\circ$

$h = -10 \rightarrow 9$

$k = -13 \rightarrow 13$

$l = -11 \rightarrow 13$

#### Refinement

Refinement on  $F^2$

Least-squares matrix: full

$R[F^2 > 2\sigma(F^2)] = 0.039$

$wR(F^2) = 0.112$

$S = 1.08$

Secondary atom site location: difference Fourier map

Hydrogen site location: inferred from neighbouring sites

H-atom parameters constrained

$w = 1/[\sigma^2(F_o^2) + (0.0556P)^2 + 0.242P]$

where  $P = (F_o^2 + 2F_c^2)/3$

$(\Delta/\sigma)_{\max} < 0.001$

1797 reflections  $\Delta\rho_{\max} = 0.22 \text{ e } \text{\AA}^{-3}$   
 92 parameters  $\Delta\rho_{\min} = -0.29 \text{ e } \text{\AA}^{-3}$   
 Primary atom site location: structure-invariant direct methods Extinction correction: none

*Special details*

**Geometry.** All e.s.d.'s (except the e.s.d. in the dihedral angle between two l.s. planes) are estimated using the full covariance matrix. The cell e.s.d.'s are taken into account individually in the estimation of e.s.d.'s in distances, angles and torsion angles; correlations between e.s.d.'s in cell parameters are only used when they are defined by crystal symmetry. An approximate (isotropic) treatment of cell e.s.d.'s is used for estimating e.s.d.'s involving l.s. planes.

**Refinement.** Refinement of  $F^2$  against ALL reflections. The weighted  $R$ -factor  $wR$  and goodness of fit  $S$  are based on  $F^2$ , conventional  $R$ -factors  $R$  are based on  $F$ , with  $F$  set to zero for negative  $F^2$ . The threshold expression of  $F^2 > \sigma(F^2)$  is used only for calculating  $R$ -factors(gt) *etc.* and is not relevant to the choice of reflections for refinement.  $R$ -factors based on  $F^2$  are statistically about twice as large as those based on  $F$ , and  $R$ -factors based on ALL data will be even larger.

*Fractional atomic coordinates and isotropic or equivalent isotropic displacement parameters ( $\text{\AA}^2$ )*

	$x$	$y$	$z$	$U_{\text{iso}}^*/U_{\text{eq}}$
S1	0.13324 (7)	0.62675 (4)	0.16035 (4)	0.05023 (19)
N1	0.0243 (2)	0.38549 (15)	0.17149 (16)	0.0521 (4)
H1A	0.0187	0.3113	0.2103	0.063*
H1B	-0.0260	0.3963	0.0914	0.063*
C2	0.1933 (2)	0.45618 (15)	0.37261 (16)	0.0358 (4)
C1	0.1099 (2)	0.48241 (16)	0.23470 (16)	0.0379 (4)
C3	0.2661 (2)	0.33439 (17)	0.40481 (18)	0.0406 (4)
H3A	0.2535	0.2683	0.3414	0.049*
C7	0.2072 (2)	0.55347 (17)	0.46931 (18)	0.0435 (4)
H7A	0.1589	0.6352	0.4492	0.052*
C4	0.3569 (2)	0.30980 (18)	0.52939 (19)	0.0455 (4)
C5	0.3695 (2)	0.4084 (2)	0.62387 (18)	0.0500 (5)
H5A	0.4303	0.3935	0.7079	0.060*
C6	0.2927 (3)	0.5286 (2)	0.59491 (19)	0.0501 (5)
H6A	0.2989	0.5927	0.6604	0.060*
C8	0.4466 (3)	0.1803 (2)	0.5575 (2)	0.0671 (6)
H8A	0.3710	0.1115	0.5210	0.101*
H8B	0.4729	0.1686	0.6522	0.101*
H8C	0.5529	0.1786	0.5173	0.101*

*Atomic displacement parameters ( $\text{\AA}^2$ )*

	$U^{11}$	$U^{22}$	$U^{33}$	$U^{12}$	$U^{13}$	$U^{23}$
S1	0.0774 (4)	0.0330 (2)	0.0387 (3)	0.0000 (2)	0.0007 (2)	0.00264 (17)
N1	0.0726 (11)	0.0435 (8)	0.0363 (8)	-0.0142 (7)	-0.0089 (7)	0.0048 (6)
C2	0.0384 (8)	0.0362 (8)	0.0329 (8)	-0.0031 (6)	0.0046 (6)	0.0001 (6)
C1	0.0439 (9)	0.0345 (8)	0.0351 (9)	0.0016 (6)	0.0042 (7)	-0.0013 (6)
C3	0.0461 (9)	0.0380 (8)	0.0379 (9)	-0.0003 (7)	0.0066 (7)	0.0007 (7)

## supplementary materials

C7	0.0508 (10)	0.0396 (9)	0.0398 (9)	-0.0018 (7)	0.0045 (8)	-0.0032 (7)
C4	0.0433 (9)	0.0492 (10)	0.0446 (10)	0.0012 (7)	0.0078 (7)	0.0129 (8)
C5	0.0482 (10)	0.0674 (12)	0.0332 (9)	-0.0082 (9)	-0.0003 (8)	0.0076 (8)
C6	0.0576 (11)	0.0554 (11)	0.0369 (10)	-0.0097 (9)	0.0040 (8)	-0.0083 (8)
C8	0.0737 (14)	0.0647 (14)	0.0630 (14)	0.0205 (11)	0.0093 (11)	0.0223 (11)

### Geometric parameters (Å, °)

S1—C1	1.6811 (19)	C7—H7A	0.9300
N1—C1	1.315 (2)	C4—C5	1.386 (3)
N1—H1A	0.8600	C4—C8	1.509 (3)
N1—H1B	0.8600	C5—C6	1.384 (3)
C2—C7	1.392 (2)	C5—H5A	0.9300
C2—C3	1.393 (2)	C6—H6A	0.9300
C2—C1	1.484 (2)	C8—H8A	0.9600
C3—C4	1.385 (3)	C8—H8B	0.9600
C3—H3A	0.9300	C8—H8C	0.9600
C7—C6	1.379 (3)		
C1—N1—H1A	120.0	C3—C4—C5	118.45 (17)
C1—N1—H1B	120.0	C3—C4—C8	119.99 (18)
H1A—N1—H1B	120.0	C5—C4—C8	121.49 (19)
C7—C2—C3	119.16 (16)	C6—C5—C4	120.95 (18)
C7—C2—C1	120.98 (15)	C6—C5—H5A	119.5
C3—C2—C1	119.80 (15)	C4—C5—H5A	119.5
N1—C1—C2	116.80 (15)	C7—C6—C5	120.17 (17)
N1—C1—S1	121.71 (14)	C7—C6—H6A	119.9
C2—C1—S1	121.41 (12)	C5—C6—H6A	119.9
C4—C3—C2	121.29 (17)	C4—C8—H8A	109.5
C4—C3—H3A	119.4	C4—C8—H8B	109.5
C2—C3—H3A	119.4	H8A—C8—H8B	109.5
C6—C7—C2	119.91 (17)	C4—C8—H8C	109.5
C6—C7—H7A	120.0	H8A—C8—H8C	109.5
C2—C7—H7A	120.0	H8B—C8—H8C	109.5
N1—C1—C2—C3	36.0 (2)		

### Hydrogen-bond geometry (Å, °)

<i>D</i> —H $\cdots$ <i>A</i>	<i>D</i> —H	H $\cdots$ <i>A</i>	<i>D</i> $\cdots$ <i>A</i>	<i>D</i> —H $\cdots$ <i>A</i>
N1—H1A $\cdots$ S1 <sup>i</sup>	0.86	2.66	3.455 (2)	155
N1—H1B $\cdots$ S1 <sup>ii</sup>	0.86	2.58	3.422 (3)	165

Symmetry codes: (i)  $-x, y-1/2, -z+1/2$ ; (ii)  $-x, -y+1, -z$ .

Fig. 1

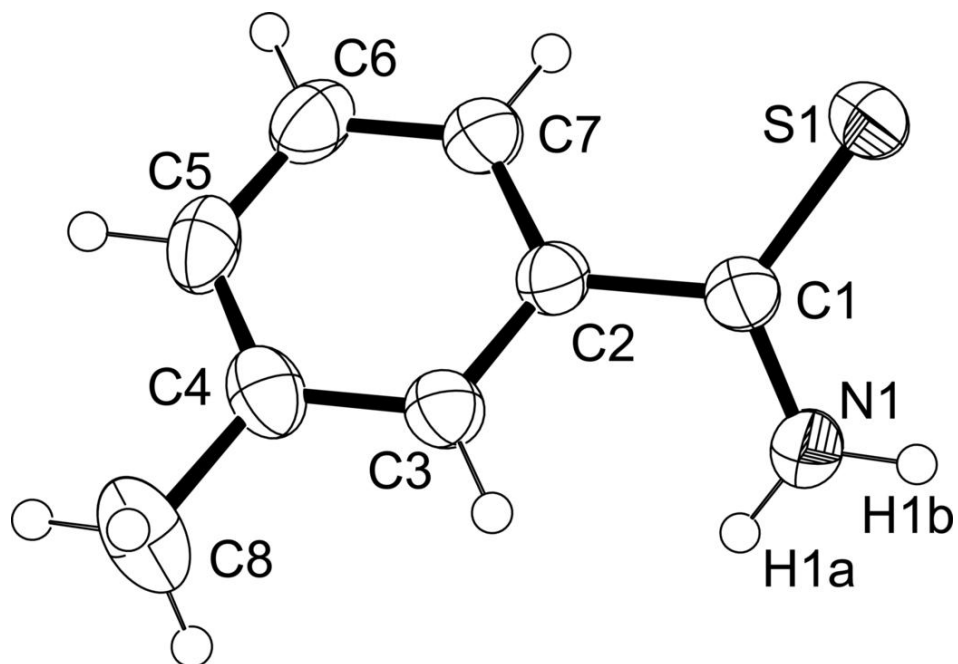


Fig. 2

